

C N T A C T

A PUBLICATION OF THE WYOMING GEOLOGICAL ASSOCIATION
VOLUME 5, No. 3 MARCH 2010

PRESIDENT'S MESSAGE STEVE REID

The good news is... everyone who attended NAPE in Houston recently reported the attitude was positive and optimistic. An end to the downturn would certainly be welcome. Along the optimistic lines, the new and improved website will be up and running by the time you read this letter. (www.wyogeo.org) We hope that it is much more user friendly and current. Thank you, Julie and Graeme for all the hard work. Our next networking night will be on March 22nd. Networking nights were instituted to encourage interaction between newer and potential members and our established membership. If you know anyone with interest in our organization, please invite them to attend and participate in our activities! This includes coworkers, colleagues, spouses, and students. Other upcoming events include the Annual Spring Dance on April 30th at the Casper Petroleum Club. The theme will be Oriental Splendor, so start planning your attire now. We are also in the planning stages of a WGA golf tournament in June at Three Crowns Golf Course with proceeds going towards the scholarship funds. Start planning your foursome. Check the website for more information. The field conference planning by Graeme and committee is coming along well. We hope to utilize Casper College and the Tate Museum. If you would like to present or contribute a paper to the guidebook that fits with our theme, Unconventional Energy Resources, please contact JoAnn True. See ya at the networking night!

TABLE OF CONTENTS

Luncheon Abstracts	2
Member News	4-6

MARCH 2010 WGA LUNCHEON MEETINGS

Meetings are held at the Casper Petroleum Club unless noted.

A lunch buffet (\$10.50) is served from 11:15 a.m. to noon.

Speaker's presentation begins at noon.

Reservations: email info@wyogeo.org or call and leave a message at WGA office 307.237.0027

Guests are always welcome!

5 March	Cheryl Sorenson	Petroleum Association of Wyoming's Sage Grouse Management Team
12 March SPE	Jerry Fritsch	Expandable Technology: Value Driven Solutions for Drilling and Production
19 March	Tom Doll	WOGCC Proposed Rules and Regulations
26 March	TBA	TBA

LUNCHEON SPEAKER ABSTRACTS

5 March Cheryl Sorenson
Sage Grouse Management Team

Petroleum Association of Wyoming

The Sage Grouse Management Team was established by the Petroleum Association of Wyoming and its member companies to address issues affecting sage grouse in Wyoming. The team, comprised of members ranging from wildlife biologists to reclamation specialists, strives to be the resource for industry education related to sage grouse. The decision on the current status of the sage grouse will also be discussed.

12 March Jerry Fritsch *SPE*
Expandable Technology: Value Driven Solutions for Drilling and Production

Enventure Global Technology

Drilling and production technology continually evolves to meet the needs of operators who are constantly challenged to produce assets more efficiently and strategically. From re-stimulating mature assets to pushing technical boundaries in deepwater discoveries, expandable technology is proving to be an economically viable solution in a broad range of application.

Solid expandable technology has evolved from early applications as a contingency liner in unplanned drilling problems. Today, incorporating expandable technology into primary well design has reduced overall well costs by up to 30% in some fields. Its combination with other advanced technology such as hydra-jet perforating and intelligent completions is maximizing stimulation programs and helping operators dramatically increase production.

In addition to the technical solutions, operators have realized significant savings by being able to conserve on pipe needs, consumable use, and environmental disturbance. Projects previously deemed cost prohibitive gained economic feasibility.

With more than 1,000 installations in the past ten years, solid expandable technology advancements have achieved industry-wide recognition through execution excellence and high reliability as successful commercial and technical solutions for drilling and production enhancement and better project economics. Expandables will continue to evolve to address ever-changing technical challenges providing operators new and more cost effective and problem solving alternatives.

19 March Tom Doll
Proposed WOGCC Rules and Regulations

Wyoming Oil and Gas Conservation Commission

The Wyoming Oil and Gas Commission is in the process of rules changes. Proposed rules and changes will be discussed, including new rules pertaining to hydraulic fracturing.

26 February TBA
TBA
TBA





Join us for the 2010 WGA Field Conference
in Casper, Wyoming at Casper College
August 4 – 8, 2010.

Featuring: A short course on Shale Gas
by Creties Jenkins of DeGolyer & MacNaughton

Confirmed speakers included:
Steve Sonnenberg – Colorado School of Mines
Creties Jenkins – DeGolyer & MacNaughton
Plus we have a few mostly confirmed speakers as well.

The field trip will be to local Cretaceous outcrops including the highly fractured Mowry Formation

Keep checking the Contact for updates.



MEMBER NEWS

AAPG Rocky Mountain Section Meeting

In Durango, Colorado, June 13-16, 2010

Hosted by **The Four Corners Geological Society**



Go to www.fourcornersgeologicalsociety.org

The Society for Organic Petrology (TSOP) Annual Meeting, September 12-16, 2010, Denver, Colorado. Sheraton Denver West Hotel. Information: Mark Pawlewicz, U.S. Geological Survey, Denver Federal Center Bldg 20, MS 977, Denver CO, 80225, ph: 303-236-5734, fax: 303-236-3202, email: pawlewicz@usgs.gov; Further details: <http://www.tsop.org/2010Denver/>

Abstracts due April 19, 2010. Conference theme: Advances in Organic Petrology. Field trip to western Colorado, Piceance Basin, Green River Oil Shale. Short course: Basics of Organic Petrography.

TSOP also offers a \$1000 graduate student RESEARCH GRANT, The Spackman Award, application deadline, May 15, 2010. See www.tsop.org for details.

Organic petrology is the branch of earth sciences that studies the origin, occurrence, structure and geohistory of sedimentary organic matter and coal.



Rocky Mountain Section **SEPM** (Society for Sedimentary Geology)

March 30 Robert Amerman

Noble Energy, Inc

Stratigraphy of a Mass-Transport Dominated Deepwater Carbonate Interval



Networking Night



Monday March 22nd
5 to 7 pm
Casper Petroleum Club
Open Bar & Light Fare

Come Meet, Greet, & Mingle!

WGA Spring Dance

Oriental Splendor

Friday, April 30th

Casper Petroleum Club

Band ~ Swing Sounds

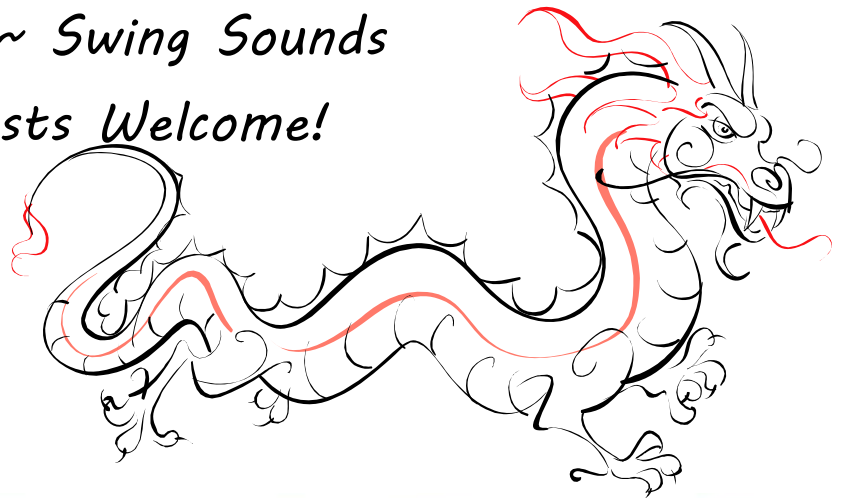
Guests Welcome!

Contact Joanie

at

237-7771

for info



50 & 60 YEAR MEMBER LUNCHEON

SEE WEBSITE FOR MORE PICTURES!



PTTC Workshops Spring 2010

How to Find Bypassed Pay in Old Wells Using DST Data

Tuesday-Thursday, March 9-11, 2010

Colorado School of Mines; Ben Parker Student Center, Ballroom C

Fee: \$525; Includes: refreshments, workbook, and PDH certificate

Instructor: Hugh W. Reid

The course is designed for geologists, engineers & technicians who encounter or utilize DST results and reports in their exploration & production decisions. In fact any professional who needs to make more sense of the numerous old DSTs which are present in so many wells, often with confusing results. Particularly appropriate for those prospecting for bypassed pay using logs and geology, who may wish to verify their conclusions from the DST or for regional geologists using show maps of DST results.



Carbonate Diagenesis, Dolomitization and Porosity Evolution

Friday, April 2, 2010, Crowne Plaza Hotel, Billings Montana 8:30 am – 4:30 pm

Fee: \$185 MGS members, \$205 non-members

Includes: refreshments, lunch, class notes, and PDH certificate

Instructor: Dr. John Humphrey, Colorado School of Mines, Dept. of Geology and Geol. Eng.

Approximately half of the world's oil and gas is contained in carbonate reservoirs. Because of their extreme susceptibility to diagenesis, limestones and dolostones commonly have complex histories. While depositional setting, facies, and sedimentology can have a control on porosity distribution, it is more often the case that diagenesis dictates porosity evolution and its spatial distribution. This course will review general carbonate classification and petrology, and then focus principally on the processes and products of carbonate diagenesis, including dolomitization. Diagenetic environments and their characteristic fluid-rock interactions that lead to porosity creation and destruction will be presented.

Complex Well – Core Competency 2010

Monday through Friday, April 5-9, 2010, 8:30 am – 5:00 pm

Colorado School of Mines, Ben Parker Student Center, Ballroom E

Fee: Single person \$2300 or Company asset teams of three \$5500

Fee includes food at breaks, lunch, workbook, and PDH certificate. Limit 21 people

Instructor: Bob Knoll

An asset team program, not a drilling course, an intense cross-training course for drilling supervisors and all asset team members. A practical core-competency cross-training program, that will help the asset team optimally apply advanced exploitation technology to produce **more oil/gas faster and cheaper**.

The primary objective of this intense, five-day program is to provide students (operator asset team, D&C operational staff, management & support staff, key service providers and regulators) with an appreciation of the crucial multidiscipline aspect of optimized horizontal and more complex development well applications. The program provides a practical-based “big picture” of all the disciplines, issues, and team functions inherent in basic screening, assessing value-added and implementation; and then addresses the advanced technical options of horizontal well design, construction, intervention and production including multi-branch, MPD (managed pressure drilling), CBM, UTG, SAGD, advanced stimulation/intervention options, etc.

GeoGraphix Training: An Overview and Refresher Course

April 19, 2010 8:30 am – 5 pm,

Colorado School of Mines, Berthoud Hall Rm. 201

Fee: \$195, includes food at breaks, workbook, and PDH certificate.

Instructor: Fred Poland, Littleton, CO

Log Analysis with JLog Petrophysical Software

April 27, 2010 8:30 am – 5 pm,

Colorado School of Mines, Berthoud Hall Rm. 201, limit 10

Fee: \$195, includes food at breaks, workbook, and PDH certificate.

Instructor: Jack Bowler, Bowler Petrophysics, Inc., Denver, Colorado

Class Descriptions and Register Online: www.pttrockies.org

For more information, contact Mary Carr, 303.273.3107, mcarr@mines.edu

PTTC gratefully acknowledges support of industry, academia and the DOE's National Energy Technology Laboratory.

This material is based upon work supported by the Department of Energy under Award No. DE-FE0001175.



Lyn George

777 Overland Trail, Ste. 107
Casper, WY 82601

WYPG #1004 lgeorge@tribcsp.com
307-265-6338 office 307-267-4967 cell
307-268-4709 fax 307-237-5315 home

Consulting Geologist

Robert D. Maxwell

Mineral Property Evaluation LLC

1461 Trojan Drive
Casper, Wyoming 82609
307.472.6629
307.262.6867
mpe@vcn.com



JOHN R. KERNS Consulting Geologist AAPG Cert. #1225

OFFICE — 777 NO. OVERLAND TR. (307) 237-9339
FAX (307) 266-1823
MAILING ADDRESS — P.O. BOX 613-CASPER, WY 82602

GOOLSBY, FINLEY & ASSOCIATES, LLC

CONSULTANTS TO
THE ENERGY INDUSTRY

1551 THREE CROWNS DRIVE, SUITE #300
CASPER, WY 82604
307 266 8199

WWW.GOOLSBYFINLEY.COM

DONALD F. CARDINAL CONSULTING GEOLOGIST EXPLORATION & DEVELOPMENT

SUITE 321 (307) 237-4245
330 SOUTH CENTER STREET FAX: (307) 237-4245
CASPER, WYOMING 82601 RES: (307) 234-1335

Gerald G. Forney

Wyoming Professional Geologist PG-2887
Certified Petroleum Geologist CPG-5615

680 Emerson Street Tel (303) 830-8447
Denver, CO 80218 Fax (303) 399-3151



BARLOW & HAUN, INC.

Mark J. Doelger
President
WY PG #737

Phone 307-234-1574
Fax 307-234-1576
bhgeolwy@bresnan.net or
mjdoelgerbh@bresnan.net

225 So. David Street, Ste. A, Casper WY 82601

W.P.G. No. 20

C.P.G. No. 4198

A. Thomas Graham, Jr. Consulting Geologist

2011 Newport
Casper, WY 82609
(307) 577-0002
e-mail: grahamrock@aol.com
Cellular (307) 267-0737 Thayne (307) 883-2840

A Depth of Expertise For the Energy Industry

- Environmental Engineering
- Environmental Permitting
- Geologic Studies
- Produced Water Management
- Ground Water & Surface Water
- Injection Wells
- Production Wells
- Water Rights
- Litigation Experts
- Due Diligence
- Modeling
- GIS & Database



**Hydro
Solutions Inc**

www.hydrasi.com
Billings, MT (406)655-9555
Helena, MT (406)443-6169
Sheridan, WY (307)673-4482

GENE R. GEORGE & ASSOCIATES, INC.

Petroleum Geology, Engineering,
Hydrogeology, Regulatory Permitting

111 West Second St., Suite #400
P.O. Box 2775
Casper, WY 82602

Phone: 307-265-9199
Fax: 307-473-7138
Web: www.gga-inc.com
Email: ggeorge@trib.com



Dallen Juelfs
Vice President/Energy Lending
Mills Branch

First Interstate Bank
P: (307) 235-4403
F: (307) 265-2626
E: dallen.juelfs@fib.com

www.firstinterstatebank.com



Weatherford®
LABORATORIES

Dave Foster
Area Manager
OMNI - Casper



Integrated Laboratory Services

OMNI Laboratories
730 Glenn Road
Casper, WY 82601
USA

+1.307.265.8800 Office
+1.307.258.4050 Mobile

dave.foster@weatherfordlabs.com
www.omnilabs.com



C.S. BABB CONSULTING, LLC
Petroleum Geology, Hydrogeology, Permits

Carleton S. Babb
WY PG-579

5708 Casper Mountain Road
P.O. Box 4146
Casper, WY 82604

Phone 307:234-7376
Cell 307:262-5438
Fax 307:237-0667

E-mail: cnlbabb@wyoming.com

Joel M. Scoville
geoscience consultant
WY PG-452

georeserv inc.
reservoir geomodeling services

303.945.0883
www.georeserv.com • info@georeserv.com
1 Summit Ash, Littleton CO 80127

N.M. DOELGER CONSULTING, LLC

**Nancy
Doelger**
WY PG-543

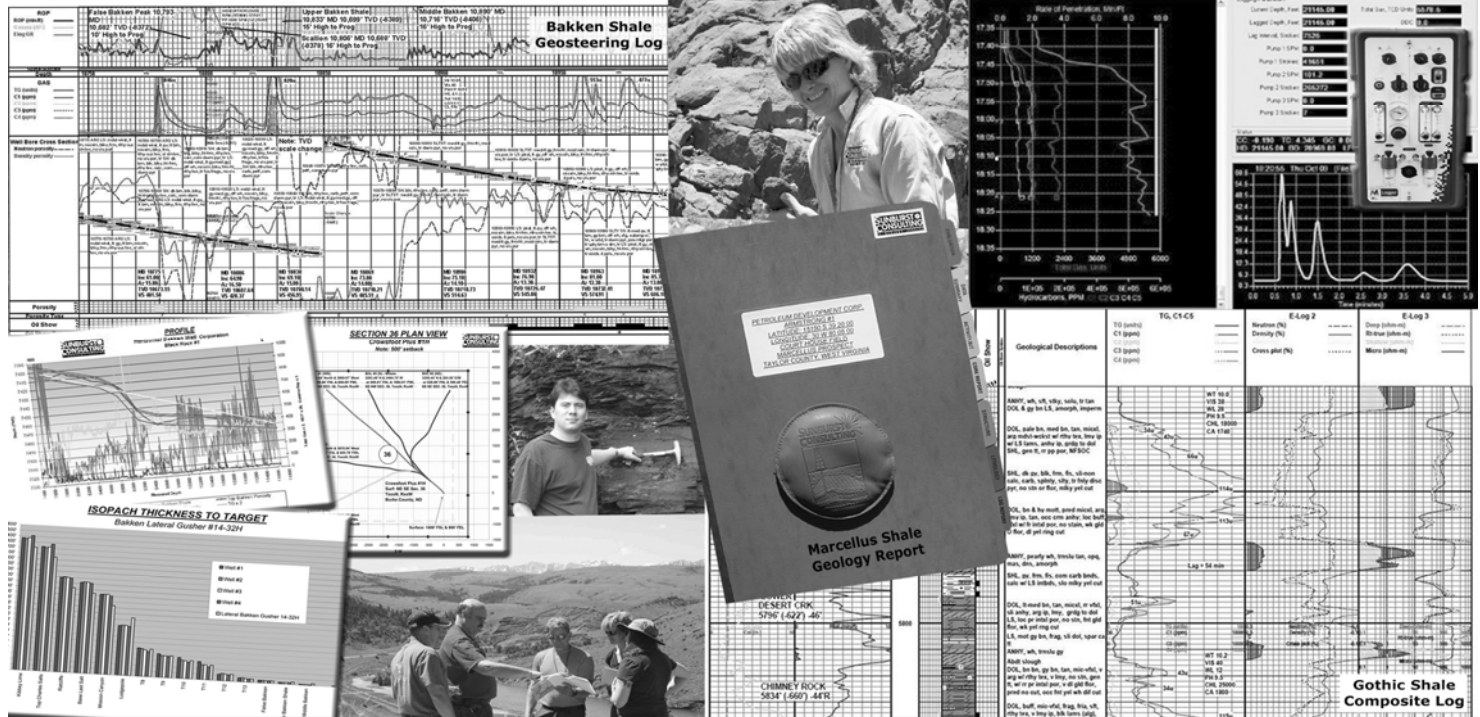
225 South David Street, Suite A
Casper, Wyoming 82601

Phone: 307-259-8581 (cell)
E-mail: nmdoelgerconsulting@gmail.com

Well Site Geology
Geosteering
Real-Time Data Access



Digital Gas Detection
Research (Rocks & Records)
Regulatory Representation



BILLINGS OFFICE
Box 51297
513 Hilltop Road, Suite #5
Billings, MT 59105
406.259.4124 • (F) 406.252.4252

geology@sunburstconsulting.com
www.sunburstconsulting.com

PITTSBURGH OFFICE
c/o Tetra Tech NUS, Inc.
661 Andersen Drive • Foster Plaza 7
Pittsburgh, PA 15220
406.794.4803



CASPER LOG LIBRARY

602 S. DAVID
CASPER, WY 82601
307-237-8471
cllllc@qwest.net

24 Hour Accessible to members. Staffed, Monday-Wednesday 8:00 am-10:00 am

Historical Geological Library

Well log data, Microfiche, Petroleum Information (Scout) cards, Production Reports, Topographic Maps of Wyoming, Petroleum Ownership Maps (POMCO), Stratigraphic Logs, Sample Logs, Montana Completion Reports, Production Histories, Rocky Mountain Drilling Reports

Equipment and Services

Microfiche viewers, scanner, and log printer. Copier and fax machine. Internet access.



WYOMING GEOLOGICAL ASSOCIATION

P.O. Box 545 • CASPER, WY 82602 • (307) 237.0027 • FAX (307) 234.4048
 INFO@WYOGEO.ORG

2010 OFFICERS

President

Steve Reid 265.5547
sgreid@bresnan.net
 Consulting Geologist

President-Elect

Graeme Finley 266.3199
graeme@goolsbyfinley.com
 Goolsby, Finley & Associates

1st Vice President

JoAnn True 266.0335
joanntrue@truecos.com
 True Oil

2nd Vice President

Mike Hawks 258.8737
mike.hawks@lincenergy.com.au
 Linc Energy

Secretary/Treasurer

Dallen Juelfs 235.4403
Dallen.Juelfs@fib.com
 First Interstate Bank

Editor

Julia Lemaster 277.9074
jlemas@state.wy.us
 WY Oil & Gas Conservation Commission

Past President

Craig Smith 232.8091
csmith@trihydro.com
 Trihydro Corporation

2010 COMMITTEES

AAPG Delegates

Mike Kozimko 303.572.3550
 Tom Anderson 233.4810

Advertising & Office Administrator

Carole Black 237.0027

Continuing Education

Ralph Specht 237.7891

Dance

Martha Horn 234.7147

Field Conference 2010

General Chair
 Graeme Finley 266.3199

Library

Dean Stilwell 261.7620

Membership & Directory

Carole Black 237.0027
info@wyogeo.org

Nomenclature Committee

Carl Babb 234.7376
 Don Cardinal 237.4245
 Gary Winter 265.8888

Paleontological Resources

Brent Breithaupt 766.2646

Publicity & Environmental Issues

Rémelle Burton Olson 683.3011

Scholarship

Kent Sundell 268.2498

SPE Liaison

Dave Chase 261.7685

Stratigraphic Committee

Carl Babb 234.7376
 Don Cardinal 237.4245
 Lyn George 265.6338
 Gary Winter 265.8888

U.W. Liaison

Amber Baltus 261.7701

CONTACT

**Submission deadline
 for the April issue is
 Monday, March 15th.**

All ads must be prepaid.
 Send ad and payment to:

WGA
 PO Box 545,
 Casper WY 82602
info@wyogeo.org

CONTACT ADVERTISING RATES

Full Page	7.5 x 9.5	\$100/month \$1000/year
1/2 Page	7.5 x 4.5	\$50/month \$500/year
1/4 Page	3.5 x 4.5	\$25/month \$250/year
Business Card	3.5 x 2	\$10/month \$100/year
Various Sizes	\$3.50 per column inch per month (\$10 minimum)	

Advertising space is also available in the membership directory and the annual field conference guidebook. Discounts are available for advertising in all three publications.



**Wyoming Geological
Association**
P.O. Box 545
Casper, Wyoming 82602
Website: www.wyogeo.org

Non-Profit Org.
U.S. Postage
PAID
Casper, Wyoming
Permit No. 299

MARCH 2010

SUNDAY	MONDAY	TUESDAY	WEDNESDAY	THURSDAY	FRIDAY	SATURDAY
f	1	2	3	4	5 Luncheon - Sorenson	6
7	8	9 Geowives @ Parkway Plaza Hawley	10	11	12 SPE Luncheon - Fritsch	13
14	15	16	17	18	19 Luncheon - Doll	20
21	22 Networking Night 5-7 @ CPC	23	24	25	26 TBA	27